

Please support
our sponsors as they
support us!
Good Fishing!



814-566-6933

FishUSA
AMERICA'S TACKLE SHOP
800.922.1219
www.FishUSA.com
6960 West Ridge Rd. Fairview, PA 16415
Online fishing information for the Erie, PA area

EDINBORO OUTDOORS
Sporting Goods
Buy • Sell • Trade
301 Mill Street • Edinboro, PA 16412
(814) 734-4727 • (814) 734-4927
www.edinborooutdoors.com
Monday thru Friday, 9 a.m. - 6 p.m.
Saturday, 9 a.m. - 5 p.m.

PRINTING CONCEPTS
INNOVATIVE PRINTING SOLUTIONS
Your complete print and direct mail source
4982 Pacific Avenue Erie, PA 16506
800-540-7805 / 814-833-8080
fax 814-833-4208
www.printingconceptsonline.com

REPRESENTATIVE RYAN BIZZARRO
WORKING FOR YOU!
1101 Peninsula Dr. Ste. 213
Erie, PA 16505
(814) 835-2880
REPBIZZARRO.COM

FOLLY'S END CAMPGROUND
8600 Route 98
Girard, PA 16417
814-474-5730
follysend@velocity.net
Karen & Jim Phillips owners

GORENFLO'S CO.
FOR ALL YOUR SHOOTING NEEDS
CUSTOM GUN SMITHING
JOHN DONOVAN
OWNER
Tues-Fri 10-5 1821 State Street
Sat 9-1 Erie, PA 16501
Closed Sun & Mon 814-452-4855

Tell No Tales Charters
Perch Pirate
814-746-5809
get \$3 off with this coupon
John Krasa, owner
web site: www.tellnotalescharters1.com
email: captain@tellnotalescharters1.com

SEAGULL MARINE
Shaping up your ship
Jim Siegel
814.434.2606
since 1984 640 W. 15th Street
Erie, PA 16502
Full Service Facility • Boat Transport • Stainless Steel
Fabrication • Parts & Accessories • Complete
Winterization • Inside Storage • Outside Storage
Special Winter Service Rates

Beals-McMahon
Painting

Richard A. "Mickey" McMahon
Proprietor

454-3676

LAKESHORE TOWING
SERVICES, INC.
UNLIMITED ON-THE-WATER TOWING
24 HOUR EMERGENCY SERVICE
LICENSED - INSURED - ACCREDITED
(814) 453-6387
VHF CH 16
34 STATE ST
ERIE, PA 16507

BRINK'S
Auto Service
710 W. 29th St.
Erie, PA 16508
814 866-0211

Wolverine Park Marina
Daily-Weekly-Monthly
& Seasonal Dock Rental
Boating Supplies
Marine Batteries
34 State St-Erie-PA-16507
814-874-0698

MOOSE
The Family Fraternity
East Erie Family Center
6060 Iroquois Avenue
Members & Guests • A Non-Smoking Facility
814-899-8113

RE/MAX
Don Chandley
Bus: (814) 898-3558 Ext. 219
Cell: (814) 882-3721
Email: donchandley@remax.net
Real Estate Group
4939 Buffalo Road
Erie, PA 16510

KEEP PENNSYLVANIA Beautiful
Litter Prevention Education • Community Greening
Proper Waste Handling • Sustainable Practices
Don Benczkowski, Program Coordinator
Lake Erie Region
coastmanerie@verizon.net
(814) 434-4178

J.J. Wurst
LANDSCAPE CONTRACTOR
and GARDEN CENTER, INC.
COMPLETE LANDSCAPE SERVICE
LAWN AND GARDEN SUPPLIES
8334 EDINBORO ROAD • ERIE, PA 16509 • (814) 476-7410
www.jjwurst.com • PA 005645

STERRETT MOTT BRESKI & SHIMEK
Attorney Jay Shimek
Wills - Powers of Attorney
Health Care Directives - Probate
jshimek@smbserie.com
814-616-4166
S.O.N.S. Member since 2009

POOR RICHARDS
BEST LITTLE LURE HOUSE IN PA
Brittany & Anthony Campenelli OWNERS
8621 West Lake Road
Fairview, PA 16415
814-474-5623

GEM CITY OUTDOORSMEN CLUB
6701 Van Camp Rd.
Fairview, PA
814-474-2492

PRESQUE ISLE GUN SHOP
2817 West 23rd Street
Erie, PA 16506
Ph: 814.835.4500
Fax: 814.835.4501
email: tparker@presqueislegunshop.com
Tim Parker

West End Hardware, LLC
1912 Liberty Street
Erie, PA 16502
True Value.
Jeff Earll, Jr.
Phone: 814/452-2342
Fax: 814/461-1289
Cell: 814/881-4569
westendhardware@truevalue.net

REAL NUTZ VODKA
Handcrafted in Pennsylvania
100% Neutral Spirits Distilled From Corn
50% ALC/VOL. 1 LITER (100 PROOF)
Learn more at realnutz.com

Mini Self Storage of Erie
Very Low Rates • Great Location
2827 W. 23rd St. (Parker's Garage)
Never a Rent Increase
on Your Rented Unit
Pre-Pay For 3 Months, Get 4th Month Free
(Valid Only for Initial Sign-Up)
838-2887

Burton Quinn-Scott
CREMATION & FUNERAL SERVICES, INC.
Four Affiliated Locations
W. James Scott, Jr.
Downtown Erie
602 West 10th Street, Erie, PA 16502
Karen Burton Hostman, Supervisor
814/452-4900 Fax 814/453-3149
jms@BurtonQuinnScott.com
BurtonQuinnScott.com

PRESQUE ISLE PASSAGE
RV PARK & CABINS
(814) 833-3272

BUSCH BEER

JOSEPH P. DANOWSKI PLASTERING
Ceilings • Arches • Patches
New Construction
SERVING ERIE SINCE 1950
INSURED
PO Box 3808 • Erie, PA 16508
Phone 455-1007

Rev. Robert H. Wilson, Director
432 Bear Creek Rd.
Saver, PA 16505
814.657.4024
Daniel H. Wilson, Operations Director
7660 Lexington Rd.
Grand, PA 16417
814.493.3604
AT THE LAKE
ministries
1204 Freedom Rd.
P.O. Box 5002
Cantbury Twp. PA 16066
atthelakeministries.org atthelakeministries@gmail.com
Boating & Fishing for Those With Special Needs

SPECIALTY AUTO • TRUCK
ACCESSORIES & UPEFITTING
KROWN
Rust Control
ERIE, PA 16508
814-835-0549

Winschel Bros. LANDSCAPING
814-824-4047

PennFuture
Jenny Tompkins, PennFuture
Campaign Manager, is
working on behalf of clean
water in the Lake Erie
Watershed.
Visit pennfuture.org/erie for more information.

PATRICK J. HARKINS
LABOR COMMITTEE CHAIRMAN
STATE REPRESENTATIVE
1ST LEGISLATIVE DISTRICT
House of Representatives
Commonwealth of Pennsylvania
202 Inva Office Building
P.O. Box 20201
Harrisburg, PA 17120-2001
(717) 787-7406 • Fax: (717) 788-4775
480 E. 26th Street
Erie, PA 16504
(814) 459-1949
Email pharkins@pahouse.net

Tudor Hook-N-Noke
814-714-3755
10543 Old Lake Rd. Lake City, PA 16423

Wm. T. SPAEDER
Since 1914
COMPREHENSIVE MECHANICAL CONTRACTING
Ph: 814.456.7014
1602 East 18th Street, Erie, PA 16510
www.spaeder.com

BATTERY OUTLET
AUTOMOTIVE • INDUSTRIAL
LAWN/GARDEN • MARINE • MOTORCYCLE
BATTERIES
LARRY BRINK, owner
Phone: 814/868-7487 2825 Liberty St.
Erie, PA 16508

Gem City Marina
Dockage & Winter Storage
Marine Mechanic
Now under management by
Lakeshore Towing 814-453-6387

Elk Creek Steelhead Cabin
Overlooking Elk Creek
Girard, Pa
World Class
Steelhead Fishing
Great Vacation Spot
(814) 434-3620
www.elkcreekcabin.com

Lake Erie Custom Charters .com
Capt. Paul Capt. Becky
Capt. Maria
Welcome Aboard
(814) 504-8181
7681 Belle Rd Harborcreek, PA 16421

FISHERMEN'S HAVEN
BAIT & TACKLE SHOP
814-909-9016
11782 Middle Road
East Springfield, PA

Perennial Green Lawn Care
www.PerennialGreenLawn.com
Call Today!
(814) 734-6056

CREATIVE IMPRINT Systems
PROMOTIONAL PRODUCTS
SCREENPRINTING • EMBROIDERY
2670 W 11th St, Erie, PA 16505 • (814) 835-1000
CREATIVEIMPRINTSYSTEMS.COM

BOB MERSKI
STATE REPRESENTATIVE
3921 BUFFALO ROAD • 16510
(814) 455-6319 | RepMerski.com

PA Steelhead Association
A nonprofit 501(c)(3) organization working to enhance and
preserve the Lake Erie Steelhead fishery in Northwestern PA
Want to know more about us?
pasteelhead.com
info@pasteelhead.com
PA Steelhead Association

12th Street Beer
12th Street Beer LLC
2756 W. 12th St.
Erie, PA
814-833-7904

KRAUS
Since 1988
810 Parade Street, Erie, PA
814-453-4314
www.krausdeptstore.com
HOURS:
Mon.-Fri. 9:30-5:30; Sat. 9-1
Plumbing & Electrical Supplies • Sharpening Service • U.S. Post Office •

East End Angler Bait & Tackle
814.898.3474
4702 E. Lake Rd.
Like us on Facebook or
Visit our Website - eastendangler.net
for fishing reports, weather and pictures
Fish Cleaning We accept
Open 7 days 6-6 Visa & Mastercard

KENNY'S GARAGE
COMPLETE AUTO REPAIR CENTER
OFFICIAL PA STATE INSPECTION & EMISSIONS STATION
2316 MCKINLEY AVENUE • ERIE, PA 16503
814-454-0385
www.KennysGarageErie.com
Serving Erie for Over 30 Years

CHON TAKE SOME FUN! Alekz POWERSPORTS
1501 Peninsula Drive • Erie, PA 16505
814-833-FUN1 • www.alekzpowersports.com



Official Publication of the S.O.N.S.

THE Bucket

VOLUME 22 • ISSUE 4
APRIL 2025

S.O.N.S. PHONE NUMBER 814-453-2270 (ALSO FAX NUMBER)
sonslakeri@aol.com • www.sonsoflakeerie.org

FISHING REPORT:

Now that spring is here, anglers have put their ice shelters in storage and are getting out their gear and also taking the covers of their boats, more and more of them are venturing out as weather permits. Facebook is loaded with pictures of nice crappie and perch catches. It only gets better from here.

THE SPEAKER AT OUR MARCH MEETING



was Jim Pfendler, Past President of the Northwest PA TU Chapter who gave an interesting slide presentation about the stream restoration process at Lamson Run, a tributary of Elk Creek in the West County that was accomplished by a dedicated group of volunteers from Trout Unlimited, 3-CU, PA Steelhead Assoc. and the SONS of Lake Erie and the outstand success it achieved to the extent that newly hatched steelhead were found in the stream during a recent survey.

UPCOMING EVENTS:

Sat April 26th 8:30 12 Rotary Pavilion Presque Isle Clean up serve lunch to volunteers

Sat May 3rd 8:30- 11 Harborcreek Municipal Park pond Kids Fishing event

Tues May 6th 6-? East Waterworks Pond Cub Scout Pack 59 fishing

Tues May 13th 10-12 East Waterworks Pond Neuro Restorative individuals fishing

Thurs May 15th 6-7:30 Asbury Woods

Sat. May 17th 9-12 Group 1 and Group 2 10-12 East Waterworks Pond 2 GSA troops fishing

We will have volunteer signup sheets at our April 28th General Membership meeting.

BIRTHDAY WISHES

for Ed Kissell, Larry Lipinski and Jerry Skrypzak were expressed at the March SONS meeting with cakes and candles. Fire regulations would not permit lighting of all candles for these three octogenarians. The 250 candles if lit would have set off the sprinkler system and summoning the fire department.



Jerry, Ed and Larry hold onto the cakes while the SONS chorus sing "Happy Birthday" (mostly off key)

NEW MEMBER

Ken Churchill attended our March meeting along with his two sons, Landon and Emmett, and won a tackle box and two fishing rods reminding me of the times when I brought my two sons to our meetings 40 years ago.





SONS 2025 MEMBERSHIP BUTTON

is a depiction of a crappie this year. This is in keeping with featuring a native species fish on the button. You can pick up the 2025 pin at anyone of our events or meetings or you can get one by sending \$3.00 to SONS of Lake Erie, PO Box 3605, Erie, PA 16508

JOIN A FRIEND TODAY!

MAIL TO: S.O.N.S., PO BOX 3605, ERIE, PA 16508



RECORD OF MEMBERSHIP

2025

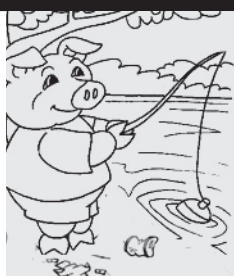
Name _____

Address _____

City _____ State _____ Zip _____

Phone _____ Date _____

☐ Renew ☐ New ☐ \$5.00 ADULT ☐ \$4.00 SENIOR CITIZEN (over 65) ☐ \$4.00 JUNIOR (under 16)



PLEASE DON'T LITTER.

JEREMY SCOTT AND FRIENDS' DREAM ADVENTURE

Jeremy Scott our speaker for our April meeting posted the following, describing a recent fishing trip:

The people in the photos are Jeremy Scott, Mike Hinkle, Tom Andris from Michigan and Ed Hackett from Atlanta Georgia and first mate. We fished for Sailfish in Guadamala trolling 8 to 9 miles per hour using teasers & fresh bait on a single circle hook. We landed 43 Sails and 8 Mahi in four days of fishing in 1900 to 5000 feet of water but baits are kept on the surface so you see the bite. The fight only lasts around 10 to 15 minutes because the water was 88 degrees and the Sailfish are catch & release and they don't want to stress them too much with a long battle. The captain circles the fish once hooked and backs the boat down on them so they are landed quickly.



10 year old Aisla Froess was recruited by Fin and Fur Chairman Bob Zawadzki to draw the winning tickets. Bob has acted as chairman of the F & F raffle since it was started 44 years ago.

FIN AND FUR RAFFLE WAS HELD AT THE ICE OUT PARTY

The conclusion of our Ice Out Party was marked with our Fin and Fur Raffle as it has since the event was started 44 years ago. The winners of the raffle were as follows:

- 1st Prize** \$ 5000 Ed Pfadt, Waterford PA
- 2nd Prize** \$ 1500 Doug Straw Lake City PA
- 3rd Prize** Charter on Heartbeat Steve Sweet Union City PA
- 4th Prize** Charter on Waterbok Mark Salsbury Union City PA
- 5th Prize** \$ 300 gift certificate Ray Massing Erie PA
- 6th Prize** \$ 250 gift certificate To Edinboro Sports Mark Chapman Corry PA
- 7th Prize** \$ 250 gift certificate to Poor Richards S. Mizikowski Erie PA
- 8th Prize** \$ 200 gift certificate to Poor Richards John Connors Albion PA
- 9th Prize** \$ 200 gift certificate to Underdog Barbecue John Haschalk Springboro PA
- 10th Prize** \$ 200 gift certificate to Poor Richard's Ed Lisiecki Erie PA
- 11th Prize** \$ 200 in admission to the Perch Pirate David Spowls Wheeling West Virginia
- 12th Prize** \$ 150 gift certificate to Fish USA Denny Maloney Waterford PA
- 13th Prize** one year membership to Lake Shore Towing Alicia Erie PA

THANK YOU DONORS!

Please support all of those listed on the next page who support us.

Our great team of officers and board of directors spent countless hours getting the logistics in place as well as the great hospitality by the staff of the Erie Shrine Club made the event a huge success. Also we would like to thank all those who attended for their support.



**PLEASE NOTE IF YOU HAVE MADE A DONATION TO US
AND YOU ARE NOT MENTIONED BELOW, WE APOLOGIZE.**

FIN AND FUR RAFFLE PRIZE DONORS

Cpt. Bob Ferraro Heartbeat Charters
Cpts Steve Skrypzak & Tom Mascharka
Waterboc Charters
Fish USA and FishErie.com
Winschel Bros. Landscaping
Poor Richard's Bait and Tackle

Mickey McMahon
Underdog Barbecue
Alex Motor Sport
Perch Pirate
Janitors Supply
Lake Shore Towing

DOOR PRIZE AND RAFFLE DONORS

1000 BEERS
 12TH ST BEER
 A DUCHINI/ACE HARDWARE
 ACE HARDWARE UNION CITY
 AFTON LANDSCAPE SUPPLY
 AIRPORT BEER
 AJ'S COLONY PLAZA
 AL A CARTE
 ALL ABOARD DINOR
 ALL ABOUT HAIR
 ALLBURN FLORISTS
 ALLEN STONEWARE
 AMBRIDGE ROSE
 ANDY'S PUB
 ARROWHEAD WINERY
 BARBATO'S ITALIAN RESTAURANT
 BEECHWOOD INN
 BEER & POP WAREHOUSE
 BERT'S BIKES & FITNESS
 BIANCHI HONDA
 BILL'S BAKERY
 BOB FERANDO FORD WORLD
 BOBCAT OF ERIE
 BOB'S GUN SHOP
 BOYER BOAT & RV
 BREW ERIE
 BUONA CUCINA
 C & C ARCHERY
 CAKE WEST MARKET
 CAKERY CAFÉ
 CALAMARI'S CALI'S
 CAPLAN COMPANY
 CHAMPION FORD
 CHICK -FIL-A
 CHICO'S RESTAURANT
 COACHS
 COCA COLA
 COLONY PIZZA & CATERING
 COLONY PUB & GRILL
 COPPER CUTS PET GROOMING
 COUNTRY HAMMER DISTILLERY
 COURTYARD WINERY
 COVENTINA SPA
 CREATIVE IMPRINTS
 CROSS ROADS DINOR
 DARCY'S PUB
 DELTA SONIC
 DOBBER AUTO SUPPLY
 DOMINO'S PIZZA
 DONATO'S PIZZA
 DONATO'S PIZZA
 DRAGONFLY
 EAST END ANGLER
 EASTLAND BOWL
 EASTWAY LANES

EAT & PARK
 EDINBORO OUTDOORS
 EL AMIGO MEXICAN GRILL
 EL CANELO RESTAURANT
 ERICSON MEMORIAL STUDIO
 ERIE BATTERIES ALTERNATORS
 CHARGERS
 ERIE OTTERS
 ERIE PHILHARMONIC ORCHESTRA
 ERIE SEA WOLVES
 ERIE WESTERN PA PORT AUTH
 ERIE-CRAWFORD COUNTY CO-OP
 FERRIERS HARDWARE
 FIRESTONE TIRE
 FIRESTONE TIRE 18TH AND STATE
 FISH USA
 FISHERMAN'S HAVEN
 FITNESS U
 FIVE GUYS HAMBURGERS
 FLIP CAFÉ
 FLOOR EXPRESSIONS
 FRENCH CREEK FISHING CO.
 FUNK N JUNK
 GAME ON CUTS
 GEANDVIEW BEER
 GEM CITY DINOR
 GEM CITY OUTDOORSMEN CLUB
 GERLACH'S GARDEN CENTER
 GIRARD BEER DISTRIBUTOR
 GIRARD BEER DISTRIBUTOR
 GOKDEN CORRAL
 GORENFLO'S GUN SHOP
 GREEN GARDEN LANES
 H & K DONUT SHOP
 H&S COMPUTER SALES &
 SERVICE
 HALLMAN CHEVROLET
 HALLMAN HYUNDI
 HERITAGE WINERY
 HILLTOP BEER
 HITE COMPANY
 HOME DEPOT
 HOPE'S OFFICE
 HUME'S AUTO
 IMPERIAL BUFFET & GRILL
 IRONSTONE MEADERY
 JAKE'S ON THE PARK
 JIMMY JOHNS SUB SHOP
 JOHN ADAMS BICYCLES
 JOHN KRUPINSKI
 JUICE JAR
 KATHY DUNN
 KRAUS DEPT STORE
 LAKESIDE BAGEL
 LARRY STADLER

LARRY'S CENTRAL MARKET
 LONG HORN STEAK HOUSE
 LAVERY BREWING
 LORIE'S WILD RIDGE
 RESTAURANT
 LUCKY LOUIES
 LUMINARY DISTILLERY
 MANDY'S TACK SHOP
 MARIA'S PIZZA
 MARY COSTELLO
 MARY RUNSER
 MAX & ERMA'S
 MC KEAN TAVERN
 MC QUILLEN AUTO
 MEEKER'S PIZZA
 MICKEY MC MAHON
 MIDWAY BEER
 MIGHTY FINE DONUTS
 MIRROR SALON
 MOMMA J'S
 MONROE BRAKE & TIRES
 MOOSEHEAD POTTERY
 MUD PUPPIES
 MY DAD'S PIZZA
 NAPA
 NAPA GIRARD
 NEIGERS FEED MILL
 NEW YORK LUNCH
 NICKELPLATE MILLS
 ODIS 12
 OFF ROAD EXPRESS PEACH
 OFF ROAD EXPRESS RTE 8
 OLIVE GARDEN
 O'REILY AUTO PARTS
 O'REILY AUTO PARTS
 OUTBACK STEAK HOUSE
 OUTPOST COFFEE SHOP
 PANOS RESTAURANT
 PATTI'S PIZZA
 PATTY LEONE
 PERCH PIRATE
 PERKINS RESTAURANT
 PERRY MILL SUPPLY
 PITTSBURGH PAINT
 PONFEIGH DISTILLERY
 POOR RICHARD'S BAIT & TACKLE
 POTRATZ FLORISTS
 PEPSI COLA CO.
 PIZZA HUT
 PRESQUE ISLE FISH & FARM
 MARKET
 PRESQUE ISLE GUN SHOP
 PRESQUE ISLE SPORTS
 PRESSED BOOK STORE
 PRIMANTI BROS
 PRINTING CONCEPTS

PUEBLO'S REAL RESTAURANT
 QUEEN NAILS
 R&S SPORTS
 RALPH MILLER JEWELERS
 RAS AUTO BODY
 REASON SALON
 RELISH
 REMNANT STORE
 RICK WEAVER BUICK
 RINGSIDE RESTAURANT
 ROMOLO'S CHOCOLATE
 ROTH CADILAC
 ROUTE 99 AUTO PART
 SAM'S CLUB
 SERAFIN'S MARKET
 SHERWIN WILLIAMS PAINT CO
 SHOOTER'S WAREHOUSE
 SILK SCREEN UNLIMITED
 SIX PACK OF BEER
 SKIPPERENO'S PIZZA
 SKY NAILS
 SMITH PROVISION
 SPORTSMAN'S WAREHOUSE
 STANGENELLI'S
 SUE AND STEVE CAPELLA
 TAMI BATKO
 TASTE OF THAI CUISINE
 THE APPLE BASKET
 TIRES FOR LESS
 TIRES FOR LESS PITTSBURG AVE
 TOYOTA FORK LIFT
 TRAWKA'S MARKET
 PRESQUE ISLE GALLERY & GIFTS
 TRINITY APIARY
 TUDOR HOOK N NOOK
 UGLY TUNA RESTAURANT
 U-HAUL BUFFALO RD
 UNDERDOG BARBECUE
 URBANIAK BROS
 VALERIO'S
 VALU HOME CENTER W 38
 VALU HOME CENTER W 12
 VALU HOME CENTER BUFF RD
 VINTAGE WOOD FIRE PIZZA
 WATERFORD PIZZA
 WEBER ELECTRIC
 WERNER BOOKS
 WEST END HARDWARE
 WESTLAKE BEER
 WESTWAY BOWLING ALLEY
 YAPLE'S VACUUM CENTER
 YAPLE'S VACUUM CENTER
 YAPLE'S VACUUM CENTER EAST
 YE OLE SWEET SHOP
 YELLOW JACKET CAFÉ

HATCHERY UPDATE

As reported, on November 20 2024, 1200 Brown Trout were delivered to the SONS hatchery. A crew of volunteers spent the next 4 months feeding treating and caring for the fish resulting their growing to 8-12 inches. On March 19 our

hatchery crew removed about 900 trout and stocked them into Presque Isle Bay. Following the fish stocking the tanks and equipment was cleaned and mad ready to receive our allotment of walleye eggs.



Above Hatchery crew pose after stocking 900 brown trout into PI Bay on 3/19/25



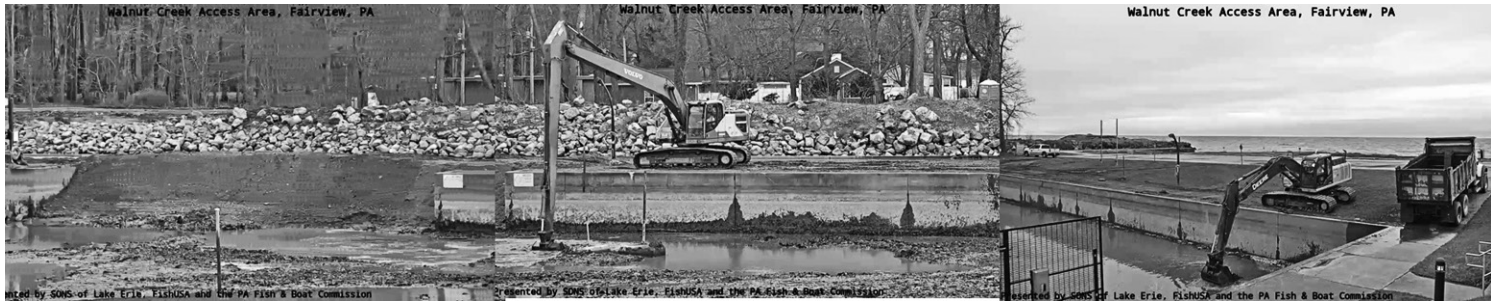
Following the brown trout stocking on April 3, 2025 our hatchery crew went to the PFBC hatchery in Linesville, Pa and picked up 4 bags containing 1.5 million walleye eggs. Some of the eggs were already hatching as they were placed into the hatching jars. Shown above our hatchery team carefully ladling the live walleye eggs into the hatching jars.



On Sat. and Sun. April 12 & 13 the doors at our hatchery were open to the public. The visitors were able to see the walleye eggs hatching as the process is nearing conclusion. The tiny walleye were released into Presque Isle Bay on April 17, 2025

WALNUT CREEK ACCESS WAS DREDGED

during March and early April after the marina basin was dammed up and pumped out.



Above are screen grab images taken off of the Walnut Creek web cam while excavators and dump trucks operated by PFBC crewmen remove debris and mud from the basin and mouth of Walnut Creek.

SEA WALL AT NORTH EAST MARINA COLAPSES

A section of seawall has broken off and fallen into the NE Marina basin. The Marina was closed for safety reasons however plans are in the works to repair the damage. beautiful fishery resources.



PIGS ROAM AMONG US

While attending the PA Steelhead Assoc. meeting on April 9th I heard some disturbing news. Three property owners who own property bordering Manchester Falls on Walnut Creek had some horrific stories about the conduct of anglers who fish the creek. Access is granted to the stream by these landowners through an easement agreement with the PFBC. What was not granted was a license for these anglers to litter, defecate, trespass into private areas, fill the air with foul language and to disturb the night time quiet of the land owners.

As mentioned last month, the PSA has requested that areas along these streams be closed to fishing from dusk to dawn. This would include the Walnut waterfalls.

After listening to the stories conveyed by the land owners we concur and support the PSA request and at the same time that our bay and lake fishermen please exercise manners and respect for our beautiful fishery resources.

Fish Picture!



MONSTER PERCH

This huge 17 inch 3.2 pound perch was posted on Facebook by Presque Isle Fish and Firm.

TOWING SERVICE STANDING BY TO HELP

Lakeshore Towing Marine Services is ready to launch their 38th year of assisting boats on Presque Isle Bay and Lake Erie. Five of Lakeshore's six work boats are already in the water. Lakeshore Towing normally assists about 350 vessels a summer. The most common reason that boats break down is water in the fuel. Other common causes of break downs are running out of gas, dead batteries, out drive failures, overheating and electrical failures.

To avoid the cost of a tow, reasonably priced towing memberships are available. If you pay for a membership every year and break down once in several years, it pays for itself. Memberships make nice gifts. The United States Coast Guard is stretched thin. Buying a membership helps Lakeshore Towing continue providing vital services.

Over the past 37 years Lakeshore Towing has assisted thousands of boaters in distress and have rescued many people from drowning. Lakeshore Towing has assisted the Coast Guard, the Fish and Boat Commission, the Border Patrol and numerous fire departments with rescue missions. Lakeshore Towing donates money to the SONS every year and also donates memberships to the SONS fundraisers. Lakeshore Towing's service to the community is invaluable. The support of the community is essential to Lakeshore Towing. Submitted by Teresa Guerrein-Lakeshore Towing Marine Services Inc.

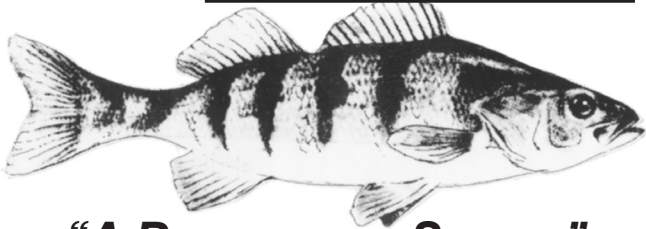


S.O.N.S. of LAKE ERIE,
SAVE OUR NATIVE SPECIES, INC.
PO BOX 3605 ERIE, PENNSYLVANIA 16508

A not-for-profit 501(c)(3) organization

"The Bucket" published monthly
by the S.O.N.S. of Lake Erie

VOLUME 22 • ISSUE 4
APRIL 2025



"A REPLENISHING SPECIES"

GENERAL MEMBERSHIP MEETING

MONDAY, APRIL 28, 2025 7:00 PM

POLISH FALCONS CLUB

431 E. 3rd Street, Erie

PROGRAM: Expert Angler Jeremy Scott will talk about Spoon Trolling Tactics that will increase your fishing success.

EPSFA SCHEDULES ANNUAL KIDS EVENT

SPONSORED BY → ERIE, PA SPORT FISHING ASSOCIATION

KIDS FISHING DAY

SATURDAY May 24th
9AM-12PM (Rain or Shine)

At Presque Isle State Park
Perry Monument

S.O.N.S. of Lake Erie Casting Lessons

EVERYONE GETS A PRIZE!

Register on-line: www.epsfa.com

>AGE GROUP: 12 and UNDER
>NO ADMISSION FEES (Limited to 100)
>FISHING POLES & BAIT PROVIDED
>FREE FOOD PROVIDED

Made with PosterMyDesign.com

WOULD YOU LIKE TO GET YOUR SONS NEWS LETTER BY EMAIL?

If so, send us an email to sonslakeri@aol.com list your name, address and note that you would like to change to the electronic version. So far we have about 575 members who have requested the change so far. You can always read the current and past issues of the *Bucket* at our web site, sonsoflakeerie.org at any time.

TIME DATED MATERIAL

NONPROFIT ORG.
US POSTAGE PAID
ERIE PA
PERMIT NO. 480

WIND TURBINE UPDATE

The PA State House of Representative voted to pass House Resolution No 53 directing the Joint State Government Commission to conduct a study and issue a report on the feasibility and potential benefits or drawbacks of developing offshore hydropower, solar and wind energy projects on the Pennsylvania portion of Lake Erie. The resolution passed through the Committee on Environmental and Natural Resources and the project is now to be evaluated by the related government entities.

We sent letters to the committee chairman and members expressing our concerns about the environmental impacts and the potential damage to our water supply and fishery. So far we have not heard of any pushback or opinions from any other sport fishing clubs or environmental advocates. We wonder why they are silent.

LAMPREY UPDATE

There was some concern that some of the layoffs made in Federal government personnel and especially NOAA would affect the stream treatment with lampricides. Recent communications have confirmed that the streams will be treated as planned in the effort to retard the spread of this vampire fish.