

**Please support
our sponsors as they
support us!
Good Fishing!**



AMENDOLA
CONSTRUCTION & MAINTENANCE

814-566-6933



FishUSA
AMERICA'S TACKLE SHOP

800.922.1219
www.FishUSA.com
6960 West Ridge Rd. Fairview, PA 16415

Online fishing information for the Erie, PA area

EDINBORO OUTDOORS
Sporting Goods

Buy • Sell • Trade

301 Mill Street • Edinboro, PA 16412
(814) 734-4727 • (814) 734-4927
www.edinborooutdoors.com
Monday thru Friday, 9 a.m. - 6 p.m.
Saturday, 9 a.m. - 5 p.m.



PRINTING CONCEPTS
INNOVATIVE PRINTING SOLUTIONS

Your complete print and direct mail source

4982 Pacific Avenue Erie, PA 16506
800-540-7805 / 814-833-8080
fax 814-833-4208
www.printingconceptsonline.com

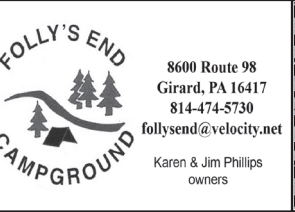


**STATE REPRESENTATIVE
RYAN BIZZARRO**

PROUDLY WORKING FOR THE PEOPLE OF PENNSYLVANIA

1101 PENINSULA DRIVE
STE. 213 | ERIE, PA 16505
(814) 835-2880

WWW.PAHOUSE.COM/BIZZARRO



**FOLLY'S END
CAMPGROUND**

8600 Route 98
Girard, PA 16417
814-474-5730
follysend@velocity.net

Karen & Jim Phillips
owners

GORENFLO'S CO.
FOR ALL YOUR SHOOTING NEEDS
CUSTOM GUN SMITHING

JOHN DONOVAN
OWNER

Tues-Fri 10-5
Sat 9-1
Closed Sun & Mon

1821 State Street
Erie, PA 16501
814-452-4855

Tell No Tales Charters

Perch Pirate
814-746-5809

get \$3 off with this coupon

John Krassa, owner
web site: **www.tellnotalescharters1.com**
email: **captain@tellnotalescharters1.com**

SEAGULL MARINE

Shaping up your ship

Jim Siegel
814.434.2606
since 1984
640 W. 15th Street
Erie, PA 16502

Full Service Facility • Boat Transport • Stainless Steel Fabrication • Parts & Accessories • Complete Winterization • Inside Storage • Outside Storage
Special Winter Service Rates

Beals-McMahon Painting

Richard A. "Mickey" McMahon
Proprietor

454-3676

www.lakeshoretowing.com

LAKESHORE TOWING

(814) 453-6387
VHF CH 16
34 STATE ST
ERIE, PA 16507

SERVICES, INC.

UNLIMITED ON-THE-WATER TOWING
24 HOUR EMERGENCY SERVICE
LICENSED - INSURED - ACCREDITED

BRINK'S

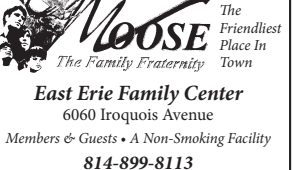
Auto Service

710 W. 29th St.
Erie, PA 16508
814 866-0211

Wolverine Park Marina
Daily-Weekly-Monthly
& Seasonal Dock Rental

Boating Supplies
Marine Batteries

34 State St-Erie-PA-16507
814-874-0698



The Family Fraternity

East Erie Family Center
6060 Iroquois Avenue
Members & Guests • A Non-Smoking Facility
814-899-8113



Don Chandley
Bus: (814) 898-3558 Ext. 219
Cell: (814) 882-3721
Email: **donchandley@remax.net**

Real Estate Group
4939 Buffalo Road
Erie, PA 16510

OUR BBQ STARTS WITH LOVING PEOPLE OVER PROFITS

Quality BBQ at an affordable price

BRISKET | RIBS | PULLED PORK
TURKEY | SAUSAGE | CHICKEN

Open 6 Days a Week from 11a - 6p or when sold out Closed Tuesdays

3802 ELMWOOD AVE | ERIE, PA 16509

J.J. Wurst

LANDSCAPE CONTRACTOR and GARDEN CENTER, INC.

COMPLETE LANDSCAPE SERVICE
LAWN AND GARDEN SUPPLIES

8334 EDINBORO ROAD • ERIE, PA 16509 • (814) 476-7410
www.jjwurst.com • PA 005645

STERRETT MOTT BRESKI & SHIMEK

Attorney Jay Shimek

Wills - Powers of Attorney
Health Care Directives - Probate
jshimek@smbserie.com
814-616-4166
S.O.N.S. Member since 2009



POOR RICHARDS

BEST LITTLE LURE HOUSE IN PA
Brittany Heubel
OWNER

BAIT, BOAT STORAGE, FISH CLEANING, FISH SMOKING, FISHING TACKLE

6821 West Lake Road
Fairview, PA 16415
814-474-5623

GEM CITY OUTDOORSMEN CLUB

6701 Van Camp Rd.
Fairview, PA

814-474-3126
814-474-2492

PRESQUE ISLE GUN SHOP

2817 West 23rd Street
Erie, PA 16506

Ph: 814.835.4500
Fx: 814.835.4501
email: **tparker@presqueislegunshop.com**

Tim Parker

West End Hardware, LLC
1912 Liberty Street
Erie, PA 16502

True Value.
START RIGHT. START HERE!

Jeff Earll, Jr.
Phone: 814/452-2342
Fax: 814/461-1289

Cell: 814/881-4569
westendhardware@truevalue.net

REAL NUTZ

HAND CRAFTED
VODKA

100% Neutral Spirits Distilled From Corn
50% ALC/VOL. 1 LITER (100 PROOF)

Handcrafted in Pennsylvania

Learn more at **realnutz.com**

Mini Self Storage of Erie
Very Low Rates • Great Location
2827 W. 23rd St. (Parker's Garage)

Never a Rent Increase on Your Rented Unit

Pre-Pay For 3 Months, Get 4th Month Free
(Valid Only for Initial Sign-Up)
838-2887

Burton Quinn-Scott
CREMATION & FUNERAL SERVICES INC.
Four Affiliated Locations

W. James Scott, Jr.

Downtown Erie
602 West 10th Street, Erie, PA 16502
Karen Burton Hostman, Supervisor
814/452-4900 Fax 814/453-3149
jms@BurtonQuinnScott.com
BurtonQuinnScott.com

PRESQUE ISLE PASSAGE
RV PARK & CABINS

(814) 833-3272

BUSCH BEER

JOSEPH P. DANOWSKI PLASTERING

Ceilings • Arches • Patches
New Construction

SERVING ERIE SINCE 1950 INSURED

PO Box 3808 • Erie, PA 16508
Phone 455-1007

Rev. Robert H. Wilson, Director
432 Bear Creek Rd.
Savoy, PA 16505
814.657.4024

Daniel H. Wilson, Operations Director
7660 Lexington Rd.
Grand, PA 16417
814.493.3604

AT THE LAKE
ministries

1204 Freedom Rd.
P.O. Box 5002
Corryville, Pa. 16506
atthelakeministries.org atthelakeministries@gmail.com

Boating & Fishing for Those With Special Needs

LINE-X PROTECTIVE COATINGS

ERIE 835-0549

KROWN
RUST CONTROL

Winschel Bros. LANDSCAPING

814-824-4047

PennFuture

Jenny Tompkins, PennFuture
Campaign Manager, is
working on behalf of clean
water in the Lake Erie
Watershed.

Visit **pennfuture.org/erie** for more information.

PATRICK J. HARKINS
LABOR COMMITTEE CHAIRMAN
STATE REPRESENTATIVE
1ST LEGISLATIVE DISTRICT
House of Representatives
Commonwealth of Pennsylvania

202 Inva Office Building
P.O. Box 202001
Harrisburg, PA 17120-2001
(717) 787-7406 • Fax: (717) 788-4775
460 E. 26th Street
Erie, PA 16504
(814) 459-1949
Email **pharkins@pahouse.net**

ELK CREEK SPORTS

EVERYTHING FOR FISHERMEN HUNTERS • ARCHERS

10543 OLD LAKE ROAD LAKE CITY, PA 16423
(814) 774-8755

Now under the management of
Bill & Lisa Noble and Keith Ashbaugh

HOWARD & Associates
Real Estate Appraisals
Auctions

PETER S. HOWARD
CAJAAE, S/CRPA
Realtor - Appraiser - Auctioneer
Office (716) 769-7300
Fax (716) 769-7341
Cell (716) 499-7447
Toll Free 1 (888) 876-4999

All Types Of Insurance

10438 Main St., #1 Alexander Findley Square
PO Box 496, Findley Lake, NY 14736-0496
findleylakeproperty@gmail.com
www.findleylake-property.com

BATTERY OUTLET

AUTOMOTIVE • INDUSTRIAL
LAWN/GARDEN • MARINE • MOTORCYCLE BATTERIES

LARRY BRINK, owner
Phone: 814/868-7487

2825 Liberty St.
Erie, PA 16508

Gem City Marina

Dockage & Winter Storage
Marine Mechanic

Now under management by
Lakeshore Towing 814-453-6387

Live, Laugh, Fish

Elk Creek Steelhead Cabin
Overlooking Elk Creek
Girard, Pa

World Class Steelhead Fishing
Great Vacation Spot
(814) 434-3620
www.elkcreekcabin.com

Lake Erie Custom Charters .com

Capt. Paul
Capt. Becky
Capt. Maria

Welcome Aboard
(814) 504-8181

7681 Belle Rd Harborcreek, PA 16421

FISHERMEN'S HAVEN
BAIT & TACKLE SHOP

814-909-9016
11922 MIDDLE ROAD EAST SPRINGFIELD, PA

Perennial Green Lawn Care

www.PerennialGreenLawn.com

Call Today!
(814) 734-6056

CREATIVE IMPRINT Systems

PROMOTIONAL PRODUCTS
SCREENPRINTING • EMBROIDERY

2670 W 11th St, Erie, PA 16505 • (814) 835-1000
CREATIVEIMPRINTSYSTEMS.COM

BOB MERSKI
STATE REPRESENTATIVE

3901 Liberty Street
(814) 455-6319 | RepMerski.com

PA Steelhead Association

A nonprofit 501(c)(3) organization working to enhance and preserve the Lake Erie Steelhead fishery in Northwestern PA

Want to know more about us?

pasteelhead.com
info@pasteelhead.com

PA Steelhead Association

12th Street Beer
Erie, PA

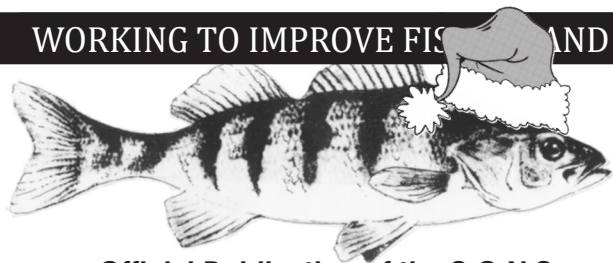
12th Street Beer LLC
2756 W. 12th St.
Erie, PA
814-833-7904

KRAUS
DEPARTMENT STORE

810 Parade Street, Erie, PA
814-453-4314
www.krausdeptstore.com

HOURS:
Mon.-Fri. 9:30-5:30; Sat. 9-1

Propane • Paint & Supplies • Screen & Storm Window Repairs • Keys • Boat Furniture • Central Heating & Air Conditioning • Lawn Care • Snow Removal • Tree Trimming & Removal • Landscaping • Fencing • Siding • Gutters • Roofing • Foundation Repairs • Basement Finishing • Attic Insulation • Sump Pumps • Water Heaters • Furnaces • Boilers • Radiators • Radiant Heating • Electric • Plumbing • HVAC • Ductwork • Insulation • Drywall • Carpentry • Masonry • Concrete • Foundation • Siding • Gutters • Roofing • Foundation Repairs • Basement Finishing • Attic Insulation • Sump Pumps • Water Heaters • Furnaces • Boilers • Radiators • Radiant Heating • Electric • Plumbing • HVAC • Ductwork • Insulation • Drywall • Carpentry • Masonry • Concrete • Foundation • Siding • Gutters • Roofing • Foundation Repairs • Basement Finishing • Attic Insulation • Sump Pumps • Water Heaters • Furnaces • Boilers • Radiators • Radiant Heating • Electric • Plumbing • HVAC • Ductwork • Insulation • Drywall • Carpentry • Masonry • Concrete • Foundation • Siding • Gutters • Roofing • Foundation Repairs • Basement Finishing • Attic Insulation • Sump Pumps • Water Heaters • Furnaces • Boilers • Radiators • Radiant Heating • Electric • Plumbing • HVAC • Ductwork • Insulation • Drywall • Carpentry • Masonry • Concrete • Foundation • Siding • Gutters • Roofing • Foundation Repairs • Basement Finishing • Attic Insulation • Sump Pumps • Water Heaters • Furnaces • Boilers • Radiators • Radiant Heating • Electric • Plumbing • HVAC • Ductwork • Insulation • Drywall • Carpentry • Masonry • Concrete • Foundation • Siding • Gutters • Roofing • Foundation Repairs • Basement Finishing • Attic Insulation • Sump Pumps • Water Heaters • Furnaces • Boilers • Radiators • Radiant Heating • Electric • Plumbing • HVAC • Ductwork • Insulation • Drywall • Carpentry • Masonry • Concrete • Foundation • Siding • Gutters • Roofing • Foundation Repairs • Basement Finishing • Attic Insulation • Sump Pumps • Water Heaters • Furnaces • Boilers • Radiators • Radiant Heating • Electric • Plumbing • HVAC • Ductwork • Insulation • Drywall • Carpentry • Masonry • Concrete • Foundation • Siding • Gutters • Roofing • Foundation Repairs • Basement Finishing • Attic Insulation • Sump Pumps • Water Heaters • Furnaces • Boilers • Radiators • Radiant Heating • Electric • Plumbing • HVAC • Ductwork • Insulation • Drywall • Carpentry • Masonry • Concrete • Foundation • Siding • Gutters • Roofing • Foundation Repairs • Basement Finishing • Attic Insulation • Sump Pumps • Water Heaters • Furnaces • Boilers • Radiators • Radiant Heating • Electric • Plumbing • HVAC • Ductwork • Insulation • Drywall • Carpentry • Masonry • Concrete • Foundation • Siding • Gutters • Roofing • Foundation Repairs • Basement Finishing • Attic Insulation • Sump Pumps • Water Heaters • Furnaces • Boilers • Radiators • Radiant Heating • Electric • Plumbing • HVAC • Ductwork • Insulation • Drywall • Carpentry • Masonry • Concrete • Foundation • Siding • Gutters • Roofing • Foundation Repairs • Basement Finishing • Attic Insulation • Sump Pumps • Water Heaters • Furnaces • Boilers • Radiators • Radiant Heating • Electric • Plumbing • HVAC • Ductwork • Insulation • Drywall • Carpentry • Masonry • Concrete • Foundation • Siding • Gutters • Roofing • Foundation Repairs • Basement Finishing • Attic Insulation • Sump Pumps • Water Heaters • Furnaces • Boilers • Radiators • Radiant Heating • Electric • Plumbing • HVAC • Ductwork • Insulation • Drywall • Carpentry • Masonry • Concrete • Foundation • Siding • Gutters • Roofing • Foundation Repairs • Basement Finishing • Attic Insulation • Sump Pumps • Water Heaters • Furnaces • Boilers • Radiators • Radiant Heating • Electric • Plumbing • HVAC • Ductwork • Insulation • Drywall • Carpentry • Masonry • Concrete • Foundation • Siding • Gutters • Roofing • Foundation Repairs • Basement Finishing • Attic Insulation • Sump Pumps • Water Heaters • Furnaces • Boilers • Radiators • Radiant Heating • Electric • Plumbing • HVAC • Ductwork • Insulation • Drywall • Carpentry • Masonry • Concrete • Foundation • Siding • Gutters • Roofing • Foundation Repairs • Basement Finishing • Attic Insulation • Sump Pumps • Water Heaters • Furnaces • Boilers • Radiators • Radiant Heating • Electric • Plumbing • HVAC • Ductwork • Insulation • Drywall • Carpentry • Masonry • Concrete • Foundation • Siding • Gutters • Roofing • Foundation Repairs • Basement Finishing • Attic Insulation • Sump Pumps • Water Heaters • Furnaces • Boilers • Radiators • Radiant Heating • Electric • Plumbing • HVAC • Ductwork • Insulation • Drywall • Carpentry • Masonry • Concrete • Foundation • Siding • Gutters • Roofing • Foundation Repairs • Basement Finishing • Attic Insulation • Sump Pumps • Water Heaters • Furnaces • Boilers • Radiators • Radiant Heating • Electric • Plumbing • HVAC • Ductwork • Insulation • Drywall • Carpentry • Masonry • Concrete • Foundation • Siding • Gutters • Roofing • Foundation Repairs • Basement Finishing • Attic Insulation • Sump Pumps • Water Heaters • Furnaces • Boilers • Radiators • Radiant Heating • Electric • Plumbing • HVAC • Ductwork • Insulation • Drywall • Carpentry • Masonry • Concrete • Foundation • Siding • Gutters • Roofing • Foundation Repairs • Basement Finishing • Attic Insulation • Sump Pumps • Water Heaters • Furnaces • Boilers • Radiators • Radiant Heating • Electric • Plumbing • HVAC • Ductwork • Insulation • Drywall • Carpentry • Masonry • Concrete • Foundation • Siding • Gutters • Roofing • Foundation Repairs • Basement Finishing • Attic Insulation • Sump Pumps • Water Heaters • Furnaces • Boilers • Radiators • Radiant Heating • Electric • Plumbing • HVAC • Ductwork • Insulation • Drywall • Carpentry • Masonry • Concrete • Foundation • Siding • Gutters • Roofing • Foundation Repairs • Basement Finishing • Attic Insulation • Sump Pumps • Water Heaters • Furnaces • Boilers • Radiators • Radiant Heating • Electric • Plumbing • HVAC • Ductwork • Insulation • Drywall • Carpentry • Masonry • Concrete • Foundation • Siding • Gutters • Roofing • Foundation Repairs • Basement Finishing • Attic Insulation • Sump Pumps • Water Heaters • Furnaces • Boilers • Radiators • Radiant Heating • Electric • Plumbing • HVAC • Ductwork • Insulation • Drywall • Carpentry • Masonry • Concrete • Foundation • Siding • Gutters • Roofing • Foundation Repairs • Basement Finishing • Attic Insulation • Sump Pumps • Water Heaters • Furnaces • Boilers • Radiators • Radiant Heating • Electric • Plumbing • HVAC • Ductwork • Insulation • Drywall • Carpentry • Masonry • Concrete • Foundation • Siding • Gutters • Roofing • Foundation Repairs • Basement Finishing • Attic Insulation • Sump Pumps • Water Heaters • Furnaces • Boilers • Radiators • Radiant Heating • Electric • Plumbing • HVAC • Ductwork • Insulation • Drywall • Carpentry • Masonry • Concrete • Foundation • Siding • Gutters • Roofing • Foundation Repairs • Basement Finishing • Attic Insulation • Sump Pumps • Water Heaters • Furnaces • Boilers • Radiators • Radiant Heating • Electric • Plumbing • HVAC • Ductwork • Insulation • Drywall • Carpentry • Masonry • Concrete • Foundation • Siding • Gutters • Roofing • Foundation Repairs • Basement Finishing • Attic Insulation • Sump Pumps • Water Heaters • Furnaces • Boilers • Radiators • Radiant Heating • Electric • Plumbing • HVAC • Ductwork • Insulation • Drywall • Carpentry • Masonry • Concrete • Foundation • Siding • Gutters • Roofing • Foundation Repairs • Basement Finishing • Attic Insulation • Sump Pumps • Water Heaters • Furnaces • Boilers • Radiators • Radiant Heating • Electric • Plumbing • HVAC • Ductwork • Insulation • Drywall • Carpentry • Masonry • Concrete • Foundation • Siding • Gutters • Roofing • Foundation Repairs • Basement Finishing • Attic Insulation • Sump Pumps • Water Heaters • Furnaces • Boilers • Radiators • Radiant Heating • Electric • Plumbing • HVAC • Ductwork • Insulation • Drywall • Carpentry • Masonry • Concrete • Foundation • Siding • Gutters • Roofing • Foundation Repairs • Basement Finishing • Attic Insulation • Sump Pumps • Water Heaters • Furnaces • Boilers • Radiators • Radiant Heating • Electric • Plumbing • HVAC • Ductwork • Insulation • Drywall • Carpentry • Masonry • Concrete • Foundation • Siding • Gutters • Roofing • Foundation Repairs • Basement Finishing • Attic Insulation • Sump Pumps • Water Heaters • Furnaces • Boilers • Radiators • Radiant Heating • Electric • Plumbing • HVAC • Ductwork • Insulation • Drywall • Carpentry • Masonry • Concrete • Foundation • Siding • Gutters • Roofing • Foundation Repairs • Basement Finishing • Attic Insulation • Sump Pumps • Water Heaters • Furnaces • Boilers • Radiators • Radiant Heating • Electric • Plumbing • HVAC • Ductwork • Insulation • Drywall • Carpentry • Masonry • Concrete • Foundation • Siding • Gutters • Roofing • Foundation Repairs • Basement Finishing • Attic Insulation • Sump Pumps • Water Heaters • Furnaces • Boilers • Radiators • Radiant Heating • Electric • Plumbing • HVAC • Ductwork • Insulation • Drywall • Carpentry • Masonry • Concrete • Foundation • Siding • Gutters • Roofing • Foundation Repairs • Basement Finishing • Attic Insulation • Sump Pumps • Water Heaters • Furnaces • Boilers • Radiators • Radiant Heating • Electric • Plumbing • HVAC • Ductwork • Insulation • Drywall • Carpentry • Masonry • Concrete • Foundation • Siding • Gutters • Roofing • Foundation Repairs • Basement Finishing • Attic Insulation • Sump Pumps • Water Heaters • Furnaces • Boilers • Radiators • Radiant Heating • Electric • Plumbing • HVAC • Ductwork • Insulation • Drywall • Carpentry • Masonry • Concrete • Foundation • Siding • Gutters • Roofing • Foundation Repairs • Basement Finishing • Attic Insulation • Sump Pumps • Water Heaters • Furnaces • Boilers • Radiators • Radiant Heating • Electric • Plumbing • HVAC • Ductwork • Insulation • Drywall • Carpentry • Masonry • Concrete • Foundation • Siding • Gutters • Roofing • Foundation Repairs • Basement Finishing • Attic Insulation • Sump Pumps • Water Heaters • Furnaces • Boilers • Radiators • Radiant Heating • Electric • Plumbing • HVAC • Ductwork • Insulation • Drywall • Carpentry • Masonry • Concrete • Foundation • Siding • Gutters • Roofing • Foundation Repairs • Basement Finishing • Attic Insulation • Sump Pumps • Water Heaters • Furnaces • Boilers • Radiators • Radiant Heating • Electric • Plumbing • HVAC • Ductwork • Insulation • Drywall • Carpentry • Masonry • Concrete • Foundation • Siding • Gutters • Roofing • Foundation Repairs • Basement Finishing • Attic Insulation • Sump Pumps • Water Heaters • Furnaces • Boilers • Radiators • Radiant Heating • Electric • Plumbing • HVAC • Ductwork • Insulation • Drywall • Carpentry • Masonry • Concrete • Foundation • Siding • Gutters • Roofing • Foundation Repairs • Basement Finishing • Attic Insulation • Sump Pumps • Water Heaters • Furnaces • Boilers • Radiators • Radiant Heating • Electric • Plumbing • HVAC • Ductwork • Insulation • Drywall • Carpentry • Masonry • Concrete • Foundation • Siding • Gutters • Roofing • Foundation Repairs • Basement Finishing • Attic Insulation • Sump Pumps • Water Heaters • Furnaces • Boilers • Radiators • Radiant Heating • Electric • Plumbing • HVAC • Ductwork • Insulation • Drywall • Carpentry • Masonry • Concrete • Foundation • Siding • Gutters • Roofing • Foundation Repairs • Basement Finishing • Attic Insulation • Sump Pumps • Water Heaters • Furnaces • Boilers • Radiators • Radiant Heating • Electric • Plumbing • HVAC • Ductwork • Insulation • Drywall • Carpentry • Masonry • Concrete • Foundation • Siding • Gutters • Roofing • Foundation Repairs • Basement Finishing • Attic Insulation • Sump Pumps • Water Heaters • Furnaces • Boilers • Radiators • Radiant Heating • Electric • Plumbing • HVAC • Ductwork • Insulation • Drywall • Carpentry • Masonry • Concrete • Foundation • Siding • Gutters • Roofing • Foundation Repairs • Basement Finishing • Attic Insulation • Sump Pumps • Water Heaters • Furnaces • Boilers • Radiators • Radiant Heating • Electric • Plumbing • HVAC • Ductwork • Insulation • Drywall • Carpentry • Masonry • Concrete • Foundation • Siding • Gutters • Roofing • Foundation Repairs • Basement Finishing • Attic Insulation • Sump Pumps • Water Heaters • Furnaces • Boilers • Radiators • Radiant Heating • Electric • Plumbing • HVAC • Ductwork • Insulation • Drywall • Carpentry • Masonry • Concrete • Foundation • Siding • Gutters • Roofing • Foundation Repairs • Basement Finishing • Attic Insulation • Sump Pumps • Water Heaters • Furnaces • Boilers • Radiators • Radiant Heating • Electric • Plumbing • HVAC • Ductwork • Insulation • Drywall • Carpentry • Masonry • Concrete • Foundation • Siding • Gutters • Roofing • Foundation Repairs • Basement Finishing • Attic Insulation • Sump Pumps • Water Heaters • Furnaces • Boilers • Radiators • Radiant Heating • Electric • Plumbing • HVAC • Ductwork • Insulation • Drywall • Carpentry • Masonry • Concrete • Foundation • Siding • Gutters • Roofing • Foundation Repairs • Basement Finishing • Attic Insulation • Sump Pumps • Water Heaters • Furnaces • Boilers • Radiators • Radiant Heating • Electric • Plumbing • HVAC • Ductwork • Insulation • Drywall • Carpentry • Masonry • Concrete • Foundation • Siding • Gutters • Roofing • Foundation Repairs • Basement Finishing • Attic Insulation • Sump Pumps • Water Heaters • Furnaces • Boilers • Radiators • Radiant Heating • Electric • Plumbing • HVAC • Ductwork • Insulation • Drywall • Carpentry • Masonry • Concrete • Foundation • Siding • Gutters • Roofing • Foundation Repairs • Basement Finishing • Attic Insulation • Sump Pumps • Water Heaters • Furnaces • Boilers • Radiators • Radiant Heating • Electric • Plumbing • HVAC • Ductwork • Insulation • Drywall • Carpentry • Masonry • Concrete • Foundation • Siding • Gutters • Roofing • Foundation Repairs • Basement Finishing • Attic Insulation • Sump Pumps • Water Heaters • Furnaces • Boilers • Radiators • Radiant Heating • Electric • Plumbing • HVAC • Ductwork • Insulation • Drywall • Carpentry • Masonry • Concrete • Foundation • Siding • Gutters • Roofing • Foundation Repairs • Basement Finishing • Attic Insulation • Sump Pumps • Water Heaters • Furnaces • Boilers • Radiators • Radiant Heating • Electric • Plumbing • HVAC • Ductwork • Insulation • Drywall • Carpentry • Masonry • Concrete • Foundation • Siding • Gutters • Roofing • Foundation Repairs • Basement Finishing • Attic Insulation • Sump Pumps • Water Heaters • Furnaces • Boilers • Radiators • Radiant Heating • Electric • Plumbing • HVAC • Ductwork • Insulation • Drywall • Carpentry • Masonry • Concrete • Foundation • Siding • Gutters • Roofing • Foundation Repairs • Basement Finishing • Attic Insulation • Sump Pumps • Water Heaters • Furnaces • Boilers • Radiators • Radiant Heating • Electric • Plumbing • HVAC • Ductwork • Insulation • Drywall • Carpentry • Masonry • Concrete • Foundation • Siding • Gutters • Roofing • Foundation Repairs • Basement Finishing • Attic Insulation • Sump Pumps • Water Heaters • Furnaces • Boilers • Radiators • Radiant Heating • Electric • Plumbing • HVAC • Ductwork • Insulation • Drywall • Carpentry • Masonry • Concrete • Foundation • Siding • Gutters • Roofing • Foundation Repairs • Basement Finishing • Attic Insulation • Sump Pumps • Water Heaters • Furnaces • Boilers • Radiators • Radiant Heating • Electric • Plumbing • HVAC • Ductwork • Insulation • Drywall • Carpentry • Masonry • Concrete • Foundation • Siding • Gutters • Roofing • Foundation Repairs • Basement Finishing • Attic Insulation • Sump Pumps • Water Heaters • Furnaces • Boilers • Radiators • Radiant Heating • Electric • Plumbing • HVAC • Ductwork • Insulation • Drywall • Carpentry • Masonry • Concrete • Foundation • Siding • Gutters • Roofing • Foundation Repairs • Basement Finishing • Attic Insulation • Sump Pumps • Water Heaters • Furnaces • Boilers • Radiators • Radiant Heating • Electric • Plumbing • HVAC • Ductwork • Insulation • Drywall • Carpentry • Masonry • Concrete • Foundation • Siding • Gutters • Roofing • Foundation Repairs • Basement Finishing • Attic Insulation • Sump Pumps • Water Heaters • Furnaces • Boilers • Radiators • Radiant Heating • Electric • Plumbing • HVAC • Ductwork • Insulation • Drywall • Carpentry • Masonry • Concrete • Foundation • Siding • Gutters • Roofing • Foundation Repairs • Basement Finishing • Attic Insulation • Sump Pumps • Water Heaters • Furnaces • Boilers • Radiators • Radiant Heating • Electric • Plumbing • HVAC • Ductwork • Insulation • Drywall • Carpentry • Masonry • Concrete • Foundation • Siding • Gutters • Roofing • Foundation Repairs • Basement Finishing • Attic Insulation • Sump Pumps • Water Heaters • Furnaces • Boilers • Radiators • Radiant Heating • Electric • Plumbing • HVAC • Ductwork • Insulation • Drywall • Carpentry • Masonry • Concrete • Foundation • Siding • Gutters • Roofing • Foundation Repairs • Basement Finishing • Attic Insulation • Sump Pumps • Water Heaters • Furnaces • Boilers • Radiators • Radiant Heating • Electric • Plumbing • HVAC • Ductwork • Insulation • Drywall • Carpentry • Masonry • Concrete • Foundation • Siding • Gutters • Roofing • Foundation Repairs • Basement Finishing • Attic Insulation • Sump Pumps • Water Heaters • Furnaces • Boilers • Radiators • Radiant Heating • Electric • Plumbing • HVAC • Ductwork • Insulation • Drywall • Carpentry • Masonry • Concrete • Foundation • Siding • Gutters • Roofing • Foundation Repairs • Basement Finishing • Attic Insulation • Sump Pumps • Water Heaters • Furnaces • Boilers • Radiators • Radiant Heating • Electric • Plumbing • HVAC • Ductwork • Insulation • Drywall • Carpentry • Masonry • Concrete • Foundation • Siding • Gutters • Roofing • Foundation Repairs • Basement Finishing • Attic Insulation • Sump Pumps • Water Heaters • Furnaces • Boilers • Radiators • Radiant Heating • Electric • Plumbing • HVAC • Ductwork • Insulation • Drywall • Carpentry • Masonry • Concrete • Foundation • Siding • Gutters • Roofing • Foundation Repairs • Basement Finishing • Attic Insulation • Sump Pumps • Water Heaters • Furnaces • Boilers • Radiators • Radiant Heating • Electric • Plumbing • HVAC • Ductwork • Insulation • Drywall • Carpentry • Masonry • Concrete • Foundation • Siding • Gutters • Roofing • Foundation Repairs • Basement Finishing • Attic Insulation • Sump Pumps • Water Heaters • Furnaces • Boilers • Radiators • Radiant Heating • Electric • Plumbing • HVAC • Ductwork • Insulation • Drywall • Carpentry • Masonry • Concrete • Foundation • Siding • Gutters • Roofing • Foundation Repairs • Basement Finishing • Attic Insulation • Sump Pumps • Water Heaters • Furnaces • Boilers • Radiators • Radiant Heating • Electric • Plumbing • HVAC • Ductwork • Insulation • Drywall • Carpentry • Masonry • Concrete • Foundation • Siding • Gutters • Roofing • Foundation Repairs • Basement Finishing • Attic Insulation • Sump Pumps • Water Heaters • Furnaces • Boilers • Radiators • Radiant Heating • Electric • Plumbing • HVAC • Ductwork • Insulation • Drywall • Carpentry • Masonry • Concrete • Foundation • Siding • Gutters • Roofing • Foundation Repairs • Basement Finishing • Attic Insulation • Sump Pumps • Water Heaters • Furnaces • Boilers • Radiators • Radiant Heating • Electric • Plumbing • HVAC • Ductwork • Insulation • Drywall • Carpentry • Masonry • Concrete • Foundation • Siding • Gutters • Roofing • Foundation Repairs • Basement Finishing • Attic Insulation • Sump Pumps • Water Heaters • Furnaces • Boilers • Radiators • Radiant Heating • Electric • Plumbing • HVAC • Ductwork • Insulation • Drywall • Carpentry • Masonry • Concrete • Foundation • Siding • Gutters • Roofing • Foundation Repairs • Basement Finishing • Attic Insulation • Sump Pumps • Water Heaters • Furnaces • Boilers • Radiators • Radiant Heating • Electric • Plumbing • HVAC • Ductwork • Insulation • Drywall • Carpentry • Masonry • Concrete • Foundation • Siding • Gutters • Roofing • Foundation Repairs • Basement Finishing • Attic Insulation • Sump Pumps • Water Heaters • Furnaces • Boilers • Radiators • Radiant Heating • Electric • Plumbing • HVAC • Ductwork • Insulation • Drywall • Carpentry • Masonry • Concrete • Foundation • Siding • Gutters • Roofing • Foundation Repairs • Basement Finishing • Attic Insulation • Sump Pumps • Water Heaters • Furnaces • Boilers • Radiators • Radiant Heating • Electric • Plumbing • HVAC • Ductwork • Insulation • Drywall • Carpentry • Masonry • Concrete • Foundation • Siding • Gutters • Roofing • Foundation Repairs • Basement Finishing • Attic Insulation • Sump Pumps • Water Heaters • Furnaces • Boilers • Radiators • Radiant Heating • Electric • Plumbing • HVAC • Ductwork • Insulation • Drywall • Carpentry • Masonry • Concrete • Foundation • Siding • Gutters • Roofing • Foundation Repairs • Basement Finishing • Attic Insulation • Sump Pumps • Water Heaters • Furnaces • Boilers • Radiators • Radiant Heating • Electric • Plumbing • HVAC • Ductwork • Insulation • Drywall • Carpentry • Masonry • Concrete • Foundation • Siding • Gutters • Roofing • Foundation Repairs • Basement Finishing • Attic Insulation • Sump Pumps • Water Heaters • Furnaces • Boilers • Radiators • Radiant Heating • Electric • Plumbing • HVAC • Ductwork • Insulation • Drywall • Carpentry • Masonry • Concrete • Foundation • Siding • Gutters • Roofing • Foundation Repairs • Basement Finishing • Attic Insulation • Sump Pumps • Water Heaters • Furnaces • Boilers • Radiators • Radiant Heating • Electric • Plumbing • HVAC • Ductwork • Insulation • Drywall • Carpentry • Masonry • Concrete • Foundation • Siding • Gutters • Roofing • Foundation Repairs • Basement Finishing • Attic Insulation • Sump Pumps • Water Heaters • Furnaces • Boilers • Radiators • Radiant Heating • Electric • Plumbing • HVAC • Ductwork • Insulation • Drywall • Carpentry • Masonry • Concrete • Foundation • Siding • Gutters • Roofing • Foundation Repairs • Basement Finishing • Attic Insulation • Sump Pumps • Water Heaters • Furnaces • Boilers • Radiators • Radiant Heating • Electric • Plumbing • HVAC • Ductwork • Insulation • Drywall • Carpentry • Masonry • Concrete • Foundation • Siding • Gutters • Roofing • Foundation Repairs • Basement Finishing • Attic Insulation • Sump Pumps • Water Heaters • Furnaces • Boilers • Radiators • Radiant Heating • Electric • Plumbing • HVAC • Ductwork • Insulation • Drywall • Carpentry • Masonry • Concrete • Foundation • Siding • Gutters • Roofing • Foundation Repairs • Basement Finishing • Attic Insulation • Sump Pumps • Water Heaters • Furnaces • Boilers • Radiators • Radiant Heating • Electric • Plumbing • HVAC • Ductwork • Insulation • Drywall • Carpentry • Masonry • Concrete • Foundation • Siding • Gutters • Roofing • Foundation Repairs • Basement Finishing • Attic Insulation • Sump Pumps • Water Heaters • Furnaces • Boilers • Radiators • Radiant Heating • Electric • Plumbing • HVAC • Ductwork • Insulation • Drywall • Carpentry • Masonry • Concrete • Foundation • Siding • Gutters • Roofing • Foundation Repairs • Basement Finishing • Attic Insulation • Sump Pumps • Water Heaters • Furnaces • Boilers • Radiators • Radiant Heating • Electric • Plumbing • HVAC • Ductwork • Insulation • Drywall • Carpentry • Masonry • Concrete • Foundation • Siding • Gutters • Roofing • Foundation Repairs • Basement Finishing • Attic Insulation • Sump Pumps • Water Heaters • Furnaces • Boilers • Radiators • Radiant Heating • Electric • Plumbing • HVAC • Ductwork • Insulation • Drywall • Carpentry • Masonry • Concrete • Foundation • Siding • Gutters • Roofing • Foundation Repairs • Basement Finishing • Attic Insulation • Sump Pumps • Water Heaters • Furnaces • Boilers • Radiators • Radiant Heating • Electric • Plumbing • HVAC • Ductwork • Insulation • Drywall • Carpentry • Masonry • Concrete • Foundation • Siding • Gutters • Roofing • Foundation Repairs • Basement Finishing • Attic Insulation • Sump Pumps • Water Heaters • Furnaces • Boilers • Radiators • Radiant Heating • Electric • Plumbing • HVAC • Ductwork • Insulation • Drywall • Carpentry



Official Publication of the S.O.N.S.

THE Bucket

VOLUME 20 • ISSUE 12
DECEMBER 2023

S.O.N.S. PHONE NUMBER 814-453-2270 (ALSO FAX NUMBER)
sonslakeri@aol.com • www.sonsoflakeerie.org

FISHING REPORT

Steelhead fishing has been great. Perch are in the Bay and good catches are being reported from the docks. SONS director Joe Springer recently caught some nice walleye off of Dobbins Landing. Here's a few pictures to complete the story:

SONS Member Paul Holtz submitted this picture on the right of four lake trout, two walleye, and a small mouth bass he caught on his last trip out on November 2.



Lower right, Fish USA manager and Pro Staff member shows a huge lake trout he caught recently. Nick is a SONS member and avid supporter who has been a speaker at several of our meetings.



GULLS FISH, TOO

On November 30th we observed a large flock of seagulls gorging themselves on minnows in the Lampe Marina. The Bay was full of them, too.



SONS Stuff Make Great Gifts

Christmas is just over a week away. If you're looking for some gifts may we suggest some of our logo merchandise? We have hats, T-shirts, 1/3 zip shirts, insulated stainless steel mugs and thermos bottles, towels and much more. You can see a full list at our website sonsoflakeerie.org. Click on: Sons Stuff. Ron Morrow will have the stuff available at our upcoming December 18th general membership meeting. Or you can email us at sonslakeri@aol.com or text Ron Morrow at 814-651-3262 and leave a message. Include description, color, size and quantity in your correspondence.

SONS STUFF PRICE LIST

Hats (regular) \$15
Hats (camo) \$15
T-shirts \$15
Polo shirts \$25 2XL 3XL \$35
Sweat Shirts \$20
Blue Wind Breakers \$25
Aprons \$15
Visors \$7
1/4 zip polo shirt XI \$30 2XL3XL \$35
Insulated SS mugs \$15
SS thermos bottles \$ 10
Fishing towel \$5
License Plates \$5
Stickers \$1
Lined wind breakers \$30
Hooded Zipper Sweat shirts \$35





SONS 2024 MEMBERSHIP BUTTON

is a depiction of a bluegill this year. This is in keeping with featuring a native species fish on the button. You can pick up the 2024 pin at anyone of our events or meetings or you can get one by sending \$3.00 to SONS of Lake Erie, PO Box 3605, Erie, PA 16508

JOIN A FRIEND TODAY!

MAIL TO: S.O.N.S., PO BOX 3605, ERIE, PA 16508



RECORD OF MEMBERSHIP

2024

Name _____

Address _____

City _____ State _____ Zip _____

Phone _____ Date _____

☐ Renew ☐ New ☐ \$5.00 ADULT ☐ \$4.00 SENIOR CITIZEN (over 65) ☐ \$4.00 JUNIOR (under 16)

REMINDER



A person shall wear a Coast Guard approved personal flotation device (PFD or life jacket) during the cold weather months from November 1st through April 30th while underway or at anchor on boats less than 16 feet in length or any canoe or kayak.

Yellow Perch caught in Presque Isle Bay or the inland waters of Presque Isle must be at least 7 inches long. The regulation is in effect from December 1 to April 30.

The Officers and the
Board of Directors
of the SONS of Lake Erie

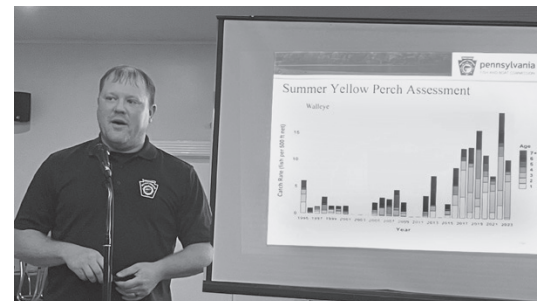
would like to wish you and
your families a Merry
Christmas and a happy, healthy,
and prosperous New Year.



THE PROGRAM AT OUR NOVEMBER MEETING

was a presentation by PFBC Lake Erie Research Unit Team Leader Capt. Mark Haffley. Using a Power Point slide presentation he explained the results of the Lake Erie Boat Angler Survey where they visited the fish cleaning stations and examined 660 carcasses of 37 lake trout, 5 smallmouth bass, 2 white bass, 525 walleye and 92 yellow perch. It showed that the average length of the walleye was 20.59 in and 5.86 years old. The average length of the lake trout was 31.49 in and 10.21 years old while the average length of the yellow perch were 10.46 in and 4.75 years old. He also reported that the research team did a yellow perch assessment at the end of June through July. They set the nets at 48-52 ft of water on the East and West sides. The West side had more diverse species but the East side nets produced more yellow perch. He also displayed a chart that showed that there was a significant rise in yellow perch since the 2021 survey and slightly higher than 2019.

The results of the PFBC study will be evaluated by the Lake Erie Committee along with the same type surveys from other Lake Erie bordering states and will be used to calculate the lake wide harvest limits which are usually generated in March.



LAMPE MARINA FISH CLEANING STATION NEARLY FINISHED

When this photo was taken on Nov.30th it showed workers putting finishing touches on the Lampe Marina fish cleaning station. It may be complete by the time you get this newsletter.





OFFICERS AND DIRECTORS FOR 2024 NAMED

According to our by-laws nominations for our officers and directors are to be taken at our November General Membership meeting with elections to follow at the December meeting. At our November 20th meeting Nominations Committee Chairman, Tom Nichols stated that the committee nominated the current incumbent club officers and directors to continue in their positions. No other nominations from the floor were made by the SONS members in attendance so the nominations were closed. Consequently there will be no need for elections at our December meeting and officers, President Jerry Skrypzak, VP Ed Kissell, Secretary Don Tombaugh and Treasurer John Krupinski and Directors Jack Klapthor, Rich Brine, Ron Morrow and Dave Mikeska will continue to serve in their positions. Terms for officers is one year, directors, three.

SONS HATCHERY REOPENS WITH 1000 BROWN TROUT

On Friday November 17, 2023 a truck from the PFBC Linesville Hatchery arrived at The SONS of Lake Erie Hatchery which is located at the foot of Chestnut St. on Presque Isle Bay. The truck was met by 20 SONS volunteers who carried into the hatchery 1000 Brown Trout by the bucketful where the 5-6" long fish were placed into tanks where they will be fed and cared for until April when the fish will be stocked into Presque Isle Bay. Hopefully they will grow to around ten inches by that time. This event marks the beginning of our annual hatchery season which runs until early May when

our allotment of walleye will hatch and also stocked into the Bay. We have a permanent hatchery crew of volunteers. Our hatchery manager is Jack Bock and other members of the team are Joe Springer, John Krupinski, Ron Morrow, Don Tombaugh and Mary Runser. They will be assisted by a host of other volunteers who will feed the fish daily and assist in the hatchery operation. Our hatchery has been in operation since 1985 during which time millions of fish including walleye, perch, steelhead and brown trout have been produced.



MEMBERS PLEASE NOTE:

IF YOU HAVE REQUESTED TO RECEIVE A SONS 2024 MEMBER BUTTON BY MAIL

they will be out shortly.



SONS MEMBERS CONTINUE TO SUPPORT FROM THE HEREAFTER

It amazes me on the number of calls we get from family members of our deceased members offering to donate used fishing equipment left behind by their loved ones. We have had donations of hundreds of rods, reels, lures, tackle boxes etc. SONS Volunteer Larry Lipinski refurbishes the rods and reels and we in turn pass them on to other organizations like scout troops etc. . We have recycled over 150 used rods and reels to other organizations and groups this year. We take the used gear and put together tackle boxes for which we sell chances at our meetings. If you know somebody who needs fishing equipment and can't afford it let us know.

We also get a lot of monetary donations in memory of our deceased members as a choice in lieu of flowers. Others add extra amounts of money in their payments for memberships or raffle tickets. This tells me that our club has earned a high level of respect from our community.

We had a donation come in from the family of Kevin Kala, who passed away in October. They included a bio I would like to share with you---

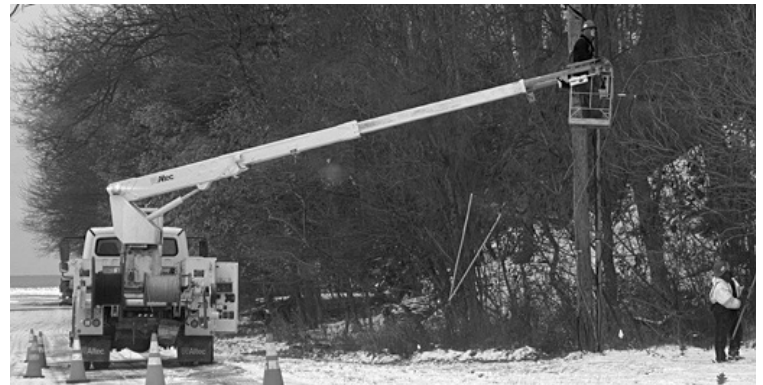
IN MEMORY OF KEVIN KALA

Kevin Kala learned two important life skills from his father Walter Kala: machining and fishing. Walter was a SONS member. The first skill helped Kevin to earn a living for his family at Great Lakes Tool and later GE but the second became a lifelong passion. When Kevin wasn't working, he was fishing for perch and walleye. And as excited he was about fishing, he was more passionate about his fish-fries. He loved to cook for his wife, family and friends. His backyard fish cookouts were legendary. Lake Erie will miss one of its most dedicated native species fishermen.

How many of us fit this same life profile?

WALNUT CREEK WEB CAM

After months of planning, pages of correspondence and phone calls, a subcontractor for Spectrum Cable Co. was finally running cable overhead and also underground to the Walnut Creek Access Area administration building.. This cable will hook into a previously installed camera that will be tied to the internet for anglers to view fishing and boating activity as well as Lake Erie Lake wave conditions in real time. The funds to complete this project were provided by a grant from the PFBC's Lake Erie Access fund to the SONS of Lake Erie. Future maintenance and technical support as well as fees will be shared with co-sponsor FishUSA. The final hook ups and equipment installation as well as website development have yet to be completed. We should have it up and running soon. Hopefully by the time you get this newsletter. We will have more in next month's newsletter.



OUTDOOR RECREATION IS A \$394 BILLION BUSINESS ANNUALLY

WASHINGTON – The USFWS recently released the results of the 2022 National Survey of Fishing, Hunting, and Wildlife-Associated Recreation. The survey, coordinated by the Service, shows that U.S. residents over the age of 16 took over 1.7 billion trips in 2022 to participate in outdoor activities like fishing, hunting, wildlife watching, recreational boating and target shooting. In doing so, outdoor enthusiasts spent an estimated \$394 billion on equipment, travel, licenses, and fees last year alone

The 2022 Survey, which offers a snapshot view of participation rates and was conducted by the NORC at the University of Chicago, finds that 148 million U.S. residents watched wildlife in 2022 while 40 million went fishing and 14.4 million hunted. This means that roughly 57% of Americans 16 years of age or older participated in wildlife watching, 15% fished and 6% hunted last year. These trips equaled a combined total of 14 billion days spent in the field, on the water and around the home viewing wildlife, an all-time high. These activities represent an economic powerhouse, where participants together spent \$394 billion in 2022—the most ever recorded in any National Survey, adjusted for inflation. The Survey has been conducted approximately every 5 years since 1955. This year's survey recognizes that in addition to wildlife-dependent activities like hunting and fishing and wildlife watching, recreational boating and target shooting are also important nature-dependent pastimes that link people to wildlife and wild places. For many, these activities are a lifestyle and gateway to the outdoors and a connection to nature that creates lifelong memories. Each National Survey of Fishing, Hunting, and Wildlife-Associated Recreation is a wealth of information allowing stakeholders, researchers, and agency partners to examine changes in recruitment, participation, and retention in outdoor activities over time. Find additional Survey resources for current and past surveys. The in-depth 2022 Survey findings are available online now and accompanying addendum reports will be produced in the coming months.

GOLD FISH FOUND IN SARA'S COVE

#outsidethewindow is a Facebook page that is maintained by the Environmental Educator team at the Tom Ridge Environmental Center. This was recently posted on the site:

*While conducting electrofishing operations yesterday in Presque Isle Bay (Sara's Cove) we collected 11 Goldfish in just over an hour of time. They came in all sizes, colors, and ages – clearly a reproducing population. In the past I've only collected an isolated individual or two. While this is a small and localized sampling effort, it certainly suggests that the Goldfish population is increasing in PIB. Goldfish (*Carassius auratus*) are non-native members of the carp family. Impacts are not fully understood, although competition with native species and other ecological disruptions have been reported.*



Think Common Carp Light. I was curious if Goldfish populations were increasing elsewhere and came across this...

This is the photo of the goldfish collected by electrofishing in Sara's Cove.

"Supersized Goldfish Could Become Superinvaders"
Scientific American

There's really nothing that can be done at this point, other than using this as (another) talking point for public education. Check out their posts, there is a lot of interesting information there.

A SMALL BUILDING

appeared on Avonia Beach in Fairview Township next to Trout Run in mid November. It did not wash up on shore but was placed there by the PFBC to be used as a structure in which biologists can collect spawn and eggs from the steelhead which are taken from Trout Run.



FISHING CHARTERS FLOURISH ON LAKE ERIE

Nov 21, 2023 | *Ottawa Outdoors*

Over a period of 10 years, revenue for Ohio's Lake Erie charter fishing industry increased more than 50% — considerably higher than inflation.

A report surveying charter fishing captains about their business in 2020 was compared to survey results from 2010. For captains, resource managers, local communities and decision makers, the findings, published in the Ohio's Lake Erie Charter Fishing Industry in its 2020 report, provide insight into the health and needs of the industry.

Lake Erie is the shallowest, southernmost and warmest of the Great Lakes. These characteristics combine to make it the most biologically productive, supporting abundant fish stocks including popular sport fish species such as walleye and yellow perch.

Ohio's Lake Erie coast also offers great access for recreational anglers, including its robust and economically important charter fishing industry.

The charter captains reported that in addition to revenues, the number of licensed fishing guides, trips and charge per trip all increased.

On average, individual businesses averaged \$20,664 in annual revenues in 2020 compared with \$15,891 in 2010. More good news: The average total operating costs per business decreased to \$10,230 from \$12,405.

The percent of captains owning their own business increased to 88% from 81%, and the percent of businesses operating only one boat decreased to 80% from 91%.

The number of captains running multiple trips per day increased, indicating a high success rate. Total trips for all businesses also increased in 2020.

Major changes the captains plan for the next five years also show optimism for the industry, as 39% of the captains surveyed plan to increase their number of trips per year in the next five years.

More than 25% of the captains plan to increase their prices in the next five years; nearly the same percentage did so in the past five years. Among captains' top concerns: Over harvest of fish stocks, illegal fishing practices, fisheries management, aquatic invasive species and harmful algal blooms.

Hopefully the survey results will help Lake Erie resource managers make decisions to support the charter fishing industry. In addition, agencies might use it as an indicator of the health of the lake.

Local communities' visitor bureaus and chambers of commerce also could use the information to promote Lake Erie tourism.

The last economic survey of the economic impact of sportfishing on Erie County was made by Penn State about 2016. It showed that sportfishing brought in \$49 million dollars into the county. I'm sure taken today a survey would show figures considerably higher.



WHY THE STORMS IN NOVEMBER?

An answer was offered on the web site MLive by Alyssa Maciejewski Nov. 17, 2023

Many who have lived along the Great Lakes for a while know that November has a tendency to have stronger storm systems and strong winds. Several storms packing gale-force winds have landed in the history books for being destructive and deadly around this time of year, and there is a reason for that.

First, let's start off with what exactly a gale is, forecasting-wise. Gale warnings are issued over water by the National Weather Service and are similar to wind advisories on land. Gale warnings will take effect when the sustained wind speed or frequent gusts reach the range of 39 to 55 mph.

During these warnings, traveling on the water can be hazardous due to the strong winds and the large waves they churn up, so it's best to find safe harbor. The next level up from gale warnings are storm warnings, which are issued when sustained winds or frequent gusts reach 55 to 73 mph. In a more general sense of the word, gales are considered strong winds.

Over the years, the Great Lakes have had a lot of famous storms that were related to strong gales, some of them having storm warnings associated with them. The storm that sank the *Edmund Fitzgerald* in Lake Superior was one such

storm, which caused the deaths of the entire crew onboard the ship. An older case was the *White Hurricane* in 1913, that led to 250 deaths and caused extensive damage to ships on Lake Huron and the coastal city of Port Huron.

Both of these cases were caused by rapidly intensifying low pressure systems that moved across the Great Lakes region that led to strong winds and heavy precipitation as a result of that intensification.

The reason these strong storms tend to occur in November has to do with the meteorological set up during this time of year. In late fall storm systems from Canada tend to follow a track that leads them to the Great Lakes region where the rapidly intensify, increasing likelihood of strong winds. This movement is due to the jet stream's location this time of year.

As we move through autumn, the jet stream shifts generally to the south as the sun's angle shifts, causing low-pressure systems to take different paths than they do in the summertime. During the fall, the difference between areas of high and low temperature also increase due to temperatures starting to cool off, which can lead to more intense fronts and stronger winds with storm systems.

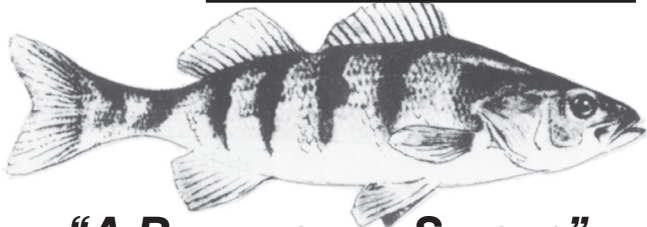


S.O.N.S. of LAKE ERIE,
SAVE OUR NATIVE SPECIES, INC.
PO BOX 3605 ERIE, PENNSYLVANIA 16508

A not-for-profit 501(c)(3) organization

"The Bucket" published monthly
by the S.O.N.S. of Lake Erie

VOLUME 20 • ISSUE 12
DECEMBER 2023



"A REPLENISHING SPECIES"

GENERAL MEMBERSHIP MEETING

MONDAY, DEC. 18 7:00 PM

POLISH FALCONS CLUB

431 E. 3rd Street, Erie

NOTE: NOTE THIS IS A WEEK EARLIER SO THAT
WE CAN CELEBRATE CHRISTMAS.

PROGRAM: There will be a showing of the WQLN
Chronicles documentary, Trade By the Lake: Bayfront.
The WQLN Chronicles series spotlights areas of history
of the Erie Region. The current set is looking at our
maritime heritage past and present. This half hour
episode is the first of the series showcasing our waterfront.

WOULD YOU LIKE TO GET YOUR SONS NEWS LETTER BY EMAIL?

If so, send us an email to sonslakeri@aol.com list your
name, address and note that you would like to change to
the electronic version. So far we have about 256 members
who have requested the change so far. You can always read
the current and past issues of the Bucket at our web site,
sonsoflakeerie.org at any time.

TIME DATED MATERIAL

NONPROFIT ORG.
US POSTAGE PAID
ERIE PA
PERMIT NO. 480

IN CASE WE GET ICE

For Safety's Sake!

RECOMMENDED ICE THICKNESS



2" or Less – STAY OFF!

4" Generally safe for Ice Fishing – Foot Travel

5 inches – Snowmobile



8 to 12 inches – Car or Small Pickup

12 to 15 inches – Medium Truck

Remember, Ice is NEVER safe. Even if ice is a foot thick in one area, just a few feet away it can be only inches thick.
~ NEVER trust ice. Its safety can be influenced by many things. ~

© 2001 May be used without permission in fishing communities. ~ Please Credit Niagara River Anglers Association.com